

The word "AMATA" is rendered in a large, bold, sans-serif font. Each letter is filled with a different image: the first 'A' shows a lush green forest; the 'M' shows a river flowing through a green landscape; the second 'A' shows a dense green forest; the 'T' shows a modern building with a glass facade; and the final 'A' shows a close-up of a building's architectural details. A thin horizontal bar runs through the middle of the letters, containing a small image of a person walking on a path in a green field.

AMATA

CREATING PERFECT CITIES
WHERE POSSIBILITIES HAPPEN

Creating Perfect Cities Where Possibilities Happen



Welcome to a world of exciting possibilities

AMATA is a leading developer and operator of industrial cities. Since 1989, we have helped global companies build an industrial base in Southeast Asia and grow their businesses.

If you are looking to set up or expand your manufacturing base in the region, you need a partner with the infrastructure and professional support to guide your business towards success.

AMATA is that partner and Southeast Asia is the place to do it.

Located at the very heart of global growth, it is no wonder investors view the region positively, especially with all the financial and commercial incentives on offer.

Over the last 35 years, AMATA has grown from a small entity to become an industrial giant, fired by the vision of Thai entrepreneur Vikrom Kromadit. We currently operate several prime sites in Thailand and Vietnam – with more in development in Myanmar and Laos – and offer a flexible package of services that create a secure and compelling investment opportunity.

Organisations from over 28 countries, including many Fortune 500 companies, have chosen AMATA as home. The mix of high quality services, environmental sustainability and long-term commitment attracts a huge range of investors who all share our optimism and desire for success.

We are always building, always expanding. Why not make an AMATA city home for your business?

"In Sanskrit, 'amata' means 'eternity'. AMATA is committed to growing commerce and economies in Thailand, Vietnam, Myanmar and Laos, while preserving the harmonious existence between industry and surrounding communities. Based on rigorous social and environmental responsibilities - under the ALL WIN philosophy - we are driven by a sustainable management approach, true to the spirit of the 'Smart City', embracing global changes and facing the challenges of the future. Happiness and success go hand-in-hand for AMATA's clients, staff and stakeholders alike...for all eternity."

*Vikrom Kromadit
Chairman and Acting CEO, AMATA
Corporation PCL*

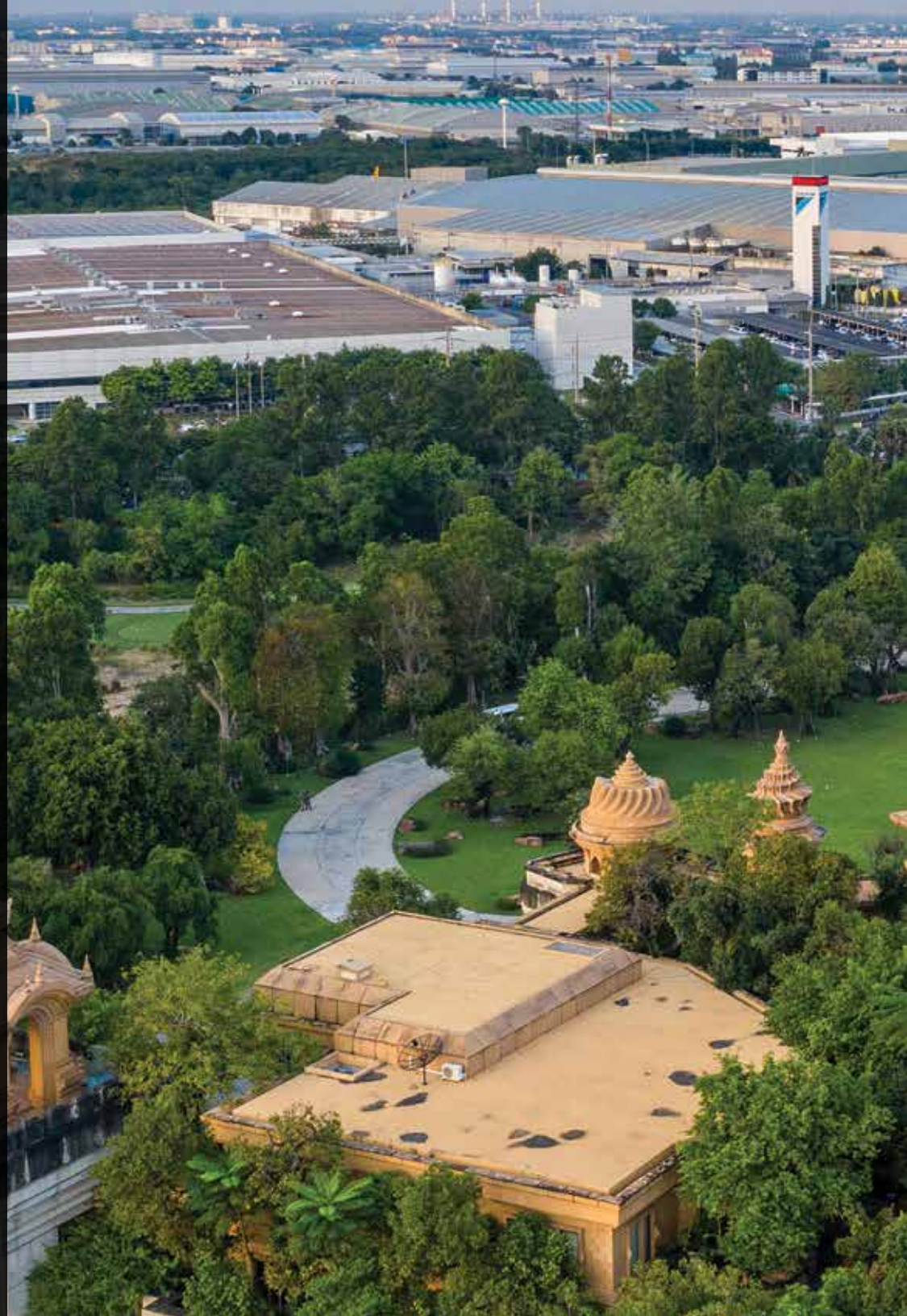


Today

- Over **150 km²** of land
- Over **1,500** tenants
- More than **350,000** people working
- **43** companies & subsidiaries in the group

Goals

- **700 km²** of land
- More than **1,000,000** people working
- **100** subsidiaries in the group
- Achieving carbon neutrality by **2040**





AMATA Group

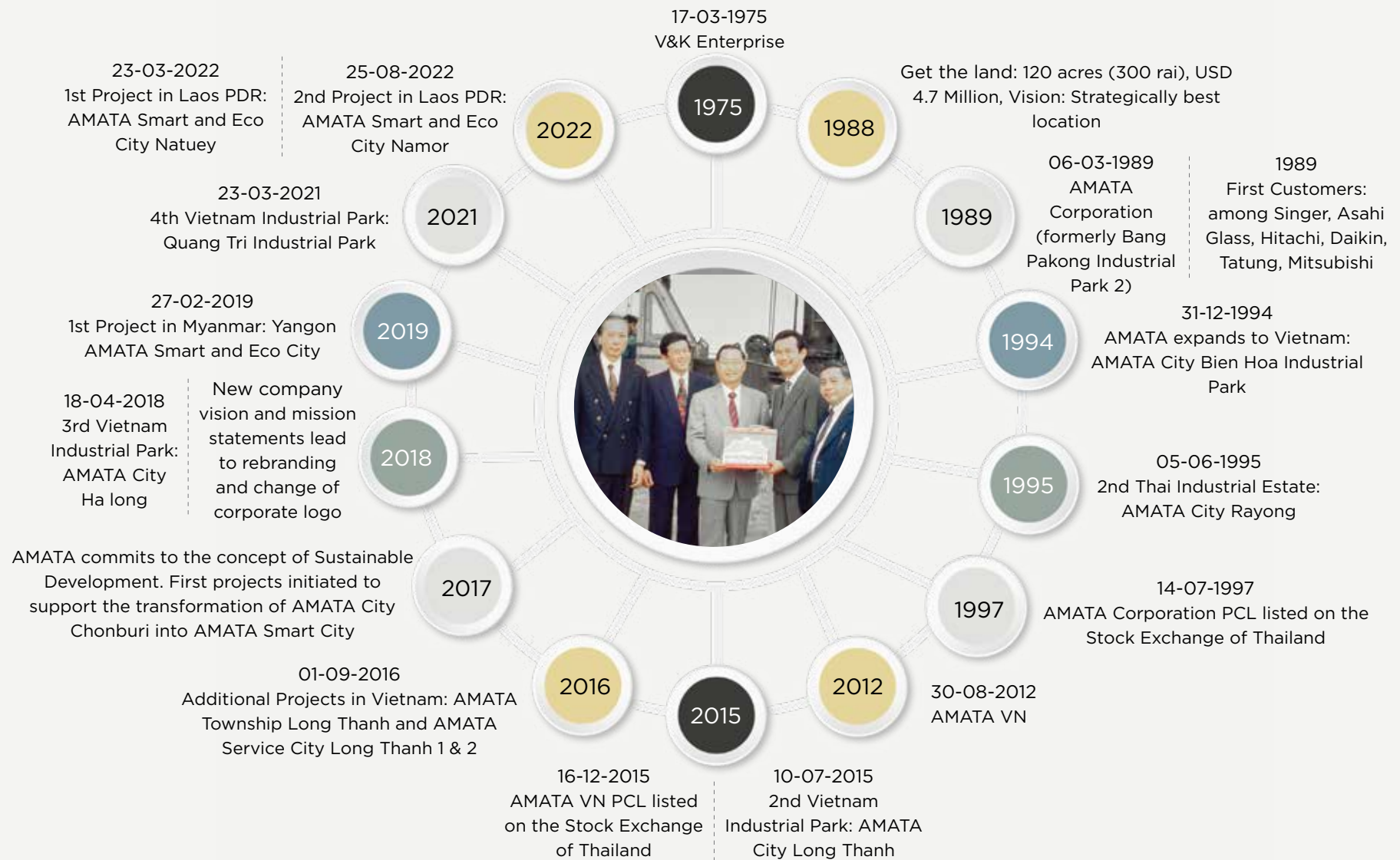
A hand holding a pen pointing to a wireframe architectural drawing of a skyscraper. The drawing is in white lines on a dark blue background. The hand is in the foreground, holding a white pen with a black tip. The background shows a complex wireframe structure of a building, with a prominent tower on the left and a lower structure on the right. The overall image has a professional, architectural feel.

A quick overview

AMATA Corporation PCL., listed on the Stock Exchange of Thailand, focuses on industrial estate development and related business in Thailand and other countries. According to its 2022 annual report, 43 subsidiaries and associate companies in which AMATA Corporation holds shares directly or indirectly operate industrial estates, provide urban development, utilities and services, or serve as holding companies.

AMATA Corporation is the major shareholder of AMATA VN PCL., also a publicly-listed company on the Stock Exchange of Thailand. All investments and businesses in Vietnam are made through AMATA VN.

AMATA History



AMATA Group Sustainability Framework

AMATA Group supports the United Nations Sustainable Development Goals, with the assistance of the Global Reporting Initiative (GRI). All projects are developed in accordance within a sustainable development framework, implementing policies to increase efficiency and minimize all possible environmental impacts.

Utilizing innovation and technology, we are evolving towards a Smart City that balances business, social and environmental factors, responding to evident global challenges and emerging risks.

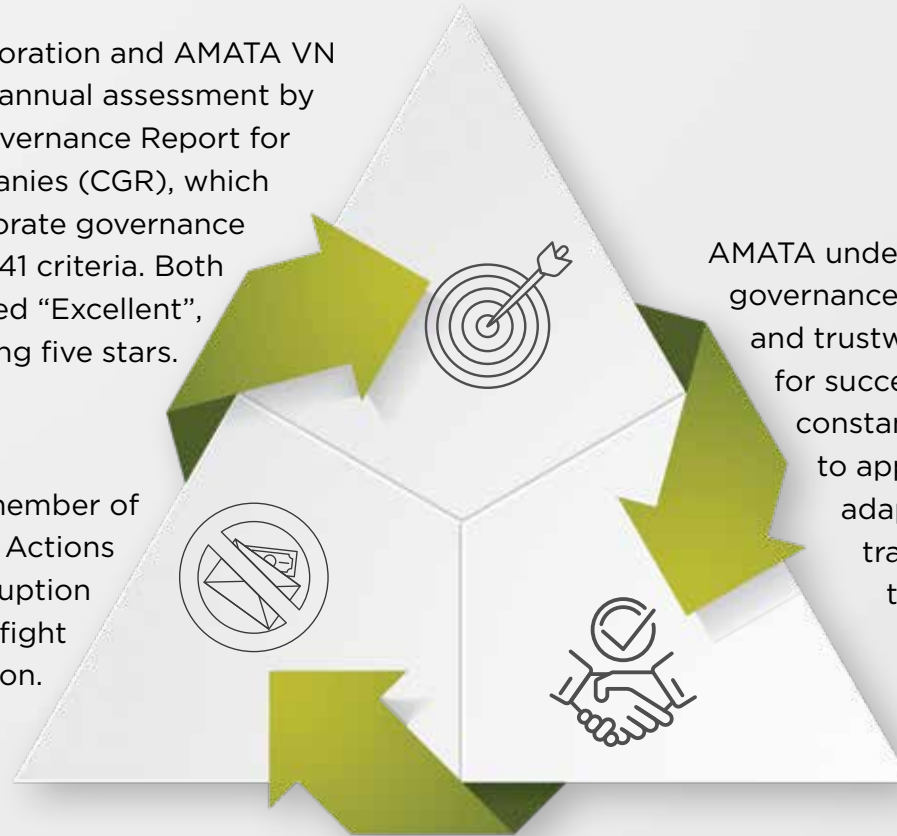


Scoring Highest Ratings for Outstanding Corporate Governance

AMATA Corporation and AMATA VN participate in the annual assessment by the Corporate Governance Report for Thai Listed Companies (CGR), which evaluates corporate governance practices using 241 criteria. Both companies were rated “Excellent”, earning five stars.

We are also a member of Thailand’s Collective Actions Coalition Against Corruption (CAC), a private initiative to fight deep-seated corruption.

AMATA understands that good corporate governance, backed-up by credibility and trustworthiness is the foundation for successful business growth. We constantly pay special attention to applying new procedures and adapting policies for greater transparency and responsibility to our stakeholders and society.



ALL WIN – AMATA’s Business Philosophy

We are committed to conducting our business in a manner that gives equal importance to the economy, society and the environment. Our sustainable management agenda mandates a balanced business approach, placing equal importance on our stakeholders, society and the ecosystem, to the benefit of all.



Our logo, with the motto “Save Earth, Safe Us” was created to represent all of our initiatives related to climate change and greenhouse gas reduction. It’s designed to create awareness of the urgency of our situation.

The motto was the result of a competition among employees. The winner was selected by a jury of executives and an environmental specialist. The full motto reads, “Earth as the source of all life we depend upon and won’t be able to survive without. Be safe in the future and have food to eat and water to drink, and safe from global warming, occurrence of natural disasters etc.”

AMATA DNA: DRIVE

DRIVE is an acronym that outlines AMATA's blueprint for leading its workforce in the most efficient and productive direction. Each letter represents a specific area in which we focus to develop our human capital in accordance with the sustainability management agenda:

D

Dependable for Success - We depend upon our employees to support AMATA's journey to achieve its goals and favourable outcomes, under the "All-Win" philosophy of resiliency and adaptability to future changes.

R

Responsive - Our employees are comfortable proactively engaging through value chain and communicating with our stakeholders.

I

Innovative - Our employees are risk-takers and are creative and innovative in finding solutions to problems. Thus they are able to initiate change in times of volatility, uncertainty, complexity and ambiguity.

V

Visionary - Our employees nurture a corporate culture of caring and coaching, in order to help build an organisation that works for everyone and grooms them to become future leaders.

E

Efficient - Our employees know how to think and work efficiently to help the organization save cost and resources, and to lead with foresight, mindfulness and accountability to deliver constructive results to all.

Towards a Smart City

A “Smart City” employs the latest technology to achieve high levels of efficiency and environmental sustainability. This concept has inspired us to transform our Chonburi industrial estate, following the vision of “Sustainable Innovation for the Next Generation.” It is in alignment with the Thai government’s Thailand 4.0 Initiative, which seeks to advance industry and the economy using technology to drive efficiencies in a sustainable manner.



SMART ENERGY

Energy Efficient city with renewable energy source and sustainable environment management



SMART ENVIRONMENT

Use of innovation and technology to enrich sustainable lifestyle and improve people’s quality of life



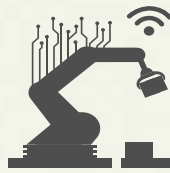
SMART COMMUNITY

Mixed-use sustainable development consisting of hotel, service apartment, restaurants, commercial facilities, conference & exhibition area



SMART INNOVATION

An innovation hub bringing the most advanced and leading companies in innovation and high technology sector, including R&D centers, contract research providers, and startups



SMART MANUFACTURING

Create a platform to attract factories with full value chain solution combining system and data among logistics, finance, manufacturing, procurement and trade



SMART MOBILITY

Sustainable traffic solution and transport monitoring through an integrated management system



SMART EDUCATION

Develop all levels of education to support AMATA Smart City development

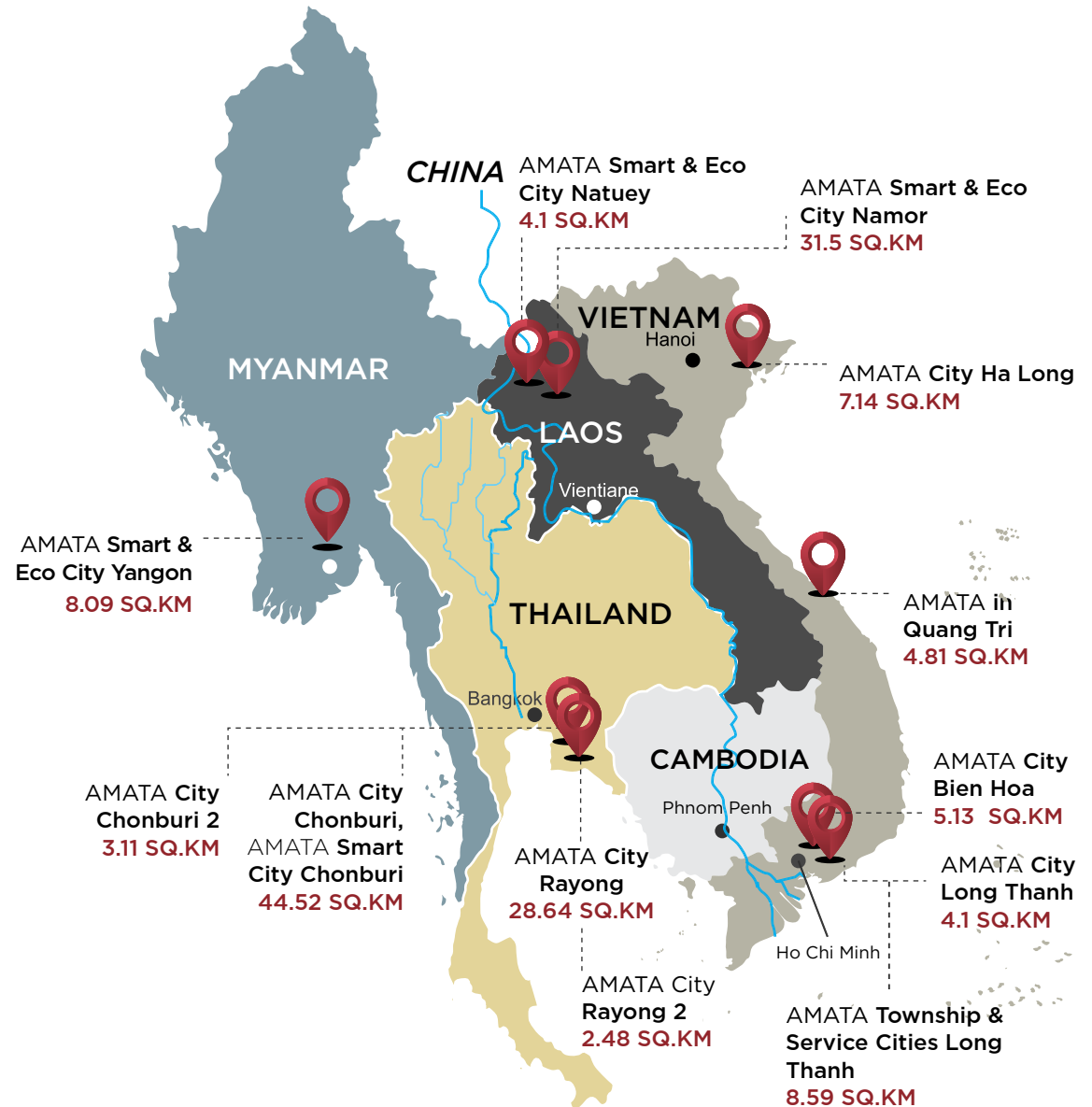
You can read more about our sustainability and community relations initiatives in the latest Sustainability Report, available on the company's website. All data is prepared in accordance with the Global Reporting Initiatives (GRI) core option.

AMATA at the heart of ASEAN

Where we operate

What began as an investment in a piece of Chonburi real estate back in 1989 has expanded to cover over 150 square kilometres of land, home to over 350,000 workers. As AMATA continues its rapid expansion, there is more to come.

AMATA currently has several estates ready to welcome your business and help you set up as quickly and efficiently as possible. Each estate is conveniently located close to major transportation hubs to aid shipping and logistics.



The Association of Southeast Asian Nations (ASEAN)

is made up of 10 countries in the region with shared economic and political interests.

When the ASEAN Economic Community (AEC) was created back in 2015, a new range of benefits became available to investors. The primary aim of the AEC is to establish a single market and production base. Currently, this has reduced tariff lines to zero in 96% of cases and 70% of intra-ASEAN trade is conducted at the most-favoured nation rate.

All AMATA estates are located within ASEAN, which means goods can flow freely; an essential ingredient to the region's success. Indeed, the region is now highly competitive in the global marketplace and we expect to see this strengthen as closer ties form between all ASEAN nations.

CLMV connections

The group of CLMV countries – Cambodia, Laos, Myanmar and Vietnam – have traditionally been overlooked. However, they now constitute the fastest growing economies in ASEAN, attracting the keen eye of investors as the bigger markets of Thailand and Indonesia become saturated.

AMATA has strong links with all CLMV countries and will have a physical presence in three of them within the next few years.

AMATA's Locations	Chonburi		Chonburi 2		Rayong		Rayong 2		Bien Hoa		Long Thanh		Quang Tri		Ha Long		Yangon		Namor		Natuey	
	Bangkok	57 km	Bangkok	97 km	Bangkok	112 km	Bangkok	157 km	Bien Hoa City	5 km	Bien Hoa City	25 km	Dong Ha City	25 km	Ha Long City	20 km	Thilawa	47 km	Muang Xai City	46 km	Luang Namtha City	36 km
	Sriracha	33 km	Sriracha	47 km	Sriracha	29 km	Sriracha	76 km	Ho Chi Minh City	30 km	Ho Chi Minh City	20 km	Hue City	47 km	Hai Phong City	25 km	Yangon City Center	34 km	Luang Prabang City	1.5 hrs by train	Luang Prabang City	1 hrs by train
	Pattaya	66 km	Pattaya	69 km	Pattaya	29 km	Pattaya	56 km					Danang City	145 km	Hanoi	130 km			Chinese Border	160 km	Vientiane City	4.5 hrs by train
	Suvarna-bhumi Int. Airport	55 km	Suvarna-bhumi Int. Airport	90 km	Suvarna-bhumi Int. Airport	108 km	Suvarna-bhumi Int. Airport	151 km	Long Thanh New Airport	20 km	Long Thanh New Airport	10 km	Phu Bai Int. Airport	60 km	Cat Bi Airport	25 km	Mingladon Airport	29 km	Luang Namtha Airport	70 km	Luang Namtha Airport	39 km
	U-Tapao Rayong Pattaya Int. Airport	97 km	U-Tapao Rayong Pattaya Int. Airport	84 km	U-Tapao Rayong Pattaya Int. Airport	48 km	U-Tapao Rayong Pattaya Int. Airport	43 km	Tan Son Nhat Airport	35 km	Tan Son Nhat Airport	25 km	Danang Int. Airport	148 km	Noi Bai Airport	160 km			Oudomxay Airport	50 km	Oudomxay Airport	81 km
	Laem Chabang Sea Port	52 km	Laem Chabang Sea Port	58 km	Laem Chabang Sea Port	23 km	Laem Chabang Sea Port	56 km	Cat Lai Port	25 km	Cat Lai Port	20 km	My Thuy Port	17 km	Cai Lan Deep Sea Port	20 km	Yangon Port (River Port)	33 km	Boten Chinese Border	45 km	Boten Chinese Border	20 km
									Cai Mep Deep Sea Port	50 km	Cai Mep Deep Sea Port	40 km	Danang Int. Sea Port	155 km	Lach Huyen Deep Sea Port	35 km			Huay Xai Thai Border	232 km	Huay Xai Thai Border	205 km

LOCATION	THAILAND	VIETNAM			MYANMAR	LAOS (PDR)
	All projects (<i>Eastern Economic Corridor EEC</i>)	AMATA City Bien Hoa, AMATA City Long Thanh (<i>South</i>)	Quang Tri Industrial Park (<i>Central</i>)	AMATA City Ha Long (<i>North</i>)	Yangon AMATA Smart and Eco City	AMATA City Namor, AMATA City Natuey
ADVANTAGES	<ul style="list-style-type: none"> Experienced workforce Government incentives Location/ market access Infrastructure Comfort <p>Smart City Chonburi:</p> <ul style="list-style-type: none"> Smart & renewable energy Smart utilities Low carbon city 	<ul style="list-style-type: none"> High-tech industrial park & Smart City Located in Top 5 investment destination for FDI into Vietnam Abundance and experienced workforce Access to local markets Direct access to expressway & easy access to social infrastructure such as urban cities, main ports and international airports 	<ul style="list-style-type: none"> Strategic location & good connectivity Competitive labor cost Integrated and modern infrastructure, utilities Dedicated customer service team and one-stop services Strong support from provincial authority 	<ul style="list-style-type: none"> Industrial park & Smart City Import/ export gateway Optimal location for production transfer from China Economic Zone status (max. tax incentives) White- and blue-collar workforce with min. wage in 3rd-level region (low cost labor) Best support from local authorities with high competitive index 	<ul style="list-style-type: none"> Access to local market Low-cost labor supply Infrastructure and utilities at international standard (inc. on-site power plant) 	<ul style="list-style-type: none"> Close access to Chinese border Link with China-Laos railway Low electricity tariff price (90% hydropower) Low cost labor supply
PRODUCTS	<ul style="list-style-type: none"> Automotive OEMs Automotive P&Cs Electronics & electric Food & beverage, consumer goods Aviation MRO Steel, metal, rubber and machinery Logistics & warehousing <p>Smart City Chonburi:</p> <ul style="list-style-type: none"> R&D, innovation EEC targeted industries 	<ul style="list-style-type: none"> High-tech industries, environmental-friendly industries and related supporting industries Electronics & electric Pharmaceuticals, medicinal, chemical and botanical products Mechanical engineering, machinery and equipment Food & beverage, consumer goods Packaging and printing technology Automotive Logistics & warehousing 	<ul style="list-style-type: none"> Textile & garment, footwear Packaging & printing Wood processing & furniture Food & beverage Electronics & electric Logistics & warehousing Supporting industries 	<ul style="list-style-type: none"> Automotive Electronics & electric Food & beverage, consumer goods Garments Machinery and components Steel, plastics & rubber Phone & parts 	<ul style="list-style-type: none"> Metal products Food & beverage, consumer goods Plastic products Garments Automotive Electronics & electric Logistics & warehousing Light industries etc. 	<ul style="list-style-type: none"> Processing industry Commercial & services Education, residential Logistics Agricultural processing industry for export Solar panel mfg. industry & renewable energy Vehicle & spare parts manufacturing Electronics & electric





THAILAND

AMATA City Chonburi and AMATA City Rayong act as major international hubs for manufacturing. Both are located in the nation's Eastern Seaboard region. The region has been declared part of the Eastern Economic Corridor (EEC). The Thai government aims to speed up development to make the EEC the most efficient and prosperous economic area in ASEAN.



VIETNAM

AMATA City Bien Hoa is located on Vietnam's north-to-south highway, close to Ho Chi Minh City.

AMATA City Long Thanh and AMATA Township Long Thanh are right on the highway connecting Ho Chi Minh and the new airport.

AMATA City Ha Long is in Quang Yen Coastal Economic Zone, Quang Ninh Province, strategically located near the capital and the Chinese border.

Collaboratively developed by AMATA City Bien Hoa Joint Stock Company, Vietnam Singapore Industrial Park Joint Stock Company, and Sumitomo Corporation, Quang Tri Industrial Park (QTIP) stands as a key industrial zone in Central Vietnam. Positioned alongside vital national transportation routes like National Highway 1A and the North-South Railway, QTIP offers seamless connectivity to city centers, airports, and seaports across the Central Region.



MYANMAR

In 2019, Amata established Yangon AMATA Smart and Eco City, and signed a joint venture with the Department of Urban and Housing Development (DUHD) under the Ministry of Construction. This led to the development of a Smart and Eco City and supporting infrastructure, logistics, services and other related businesses, strategically located close to the capital of Yangon, international airport and river port.



LAOS

In 2018, the Ministry of Planning and Investment of the government of Laos PDR and AMATA signed an agreement to develop Smart And Eco Cities in the northern provinces of Luang Namtha and Oudomxay. The development of the first phase is expected to begin in 2024. Both projects will include industrial zones with dry port, mixed-use and residential zones, and like all AMATA developments, ample green areas complemented with state-of-the-art utilities and infrastructure.

Products and opportunities

When you choose AMATA, your company can rely on strong infrastructure and professional support that makes doing business much easier. Everything is designed to make your work here as convenient and productive as possible.



Industrial land for sale or lease

If you are looking to invest in a new manufacturing plant or expand your existing operations, AMATA has prime real estate for sale or long-term lease.



AMATA Service Centres

Each AMATA city has a suite of offices at site, where our staff works diligently to help you set up and prosper. As you go through the process of setting up, you may need premises to service customers, so our well-equipped offices and meeting rooms are ready for your use.



AMATA Commercial Complex

Each AMATA city houses a community of workers. As we expand, there are opportunities to invest in the service and lifestyle infrastructure, such as education, retail, healthcare and residential. We are always looking to partner on development projects vital to the well-being of our clients.



Ready-built factories, built-to-suit factories

Whether you are looking for a quick set up or testing the market, we have a variety of ready-built factories and warehouses from 1,000 square meters in size and larger, designed to be aesthetically pleasing as well as functional.

Built-to-suit factories - If you are looking for a factory tailored made to your requirements, we have the expertise to design, develop and deliver any type of building including those with complex requirements.



POWER PLANTS



ONE-STOP SERVICES



WATER MANAGEMENT



FIBRE OPTIC NETWORK



DESIGNATED AREA FOR DATA CENTER



INTEGRATED & TECHNICAL FACILITIES SERVICES



SECURITY & SAFETY



READY-BUILT FACTORIES



THAI-CHINESE INDUSTRIAL ZONE



NATURAL GAS



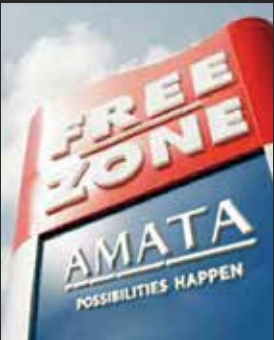
SOLID ROADS



GREEN AND CLEAN



WASTEWATER MANAGEMENT



FREE ZONE



AMATA SERVICE CENTRES



INDUSTRIAL GAS



LUMADA CENTER SOUTHEAST ASIA



POWER SUB STATION

* availability of facilities and services may vary project by project

PRODUCTS AND OPPORTUNITIES

Commercial & Leisure

Each AMATA City houses a community of workers. As we expand, there are opportunities to invest in the service and lifestyle infrastructure, such as education, retail, healthcare and residential. We are always looking to partner on development projects vital to the well-being of our clients.



VIBHARAM
AMATA CHONBURI
HOSPITAL



THAI-GERMAN
INSTITUTE



T.C. TOWN



SIRASATSUKA
AMATA SCHOOL
(SISA)



AMATA
COMMERCIAL
COMPLEX



AMATA SPRING
COUNTRY CLUB



SUANKULARB
WITTAYALAI
SCHOOL



KASETSARTY
UNIVERSITY
LABORATORY SCHOOL



LOTUS'S MALL



SUMIPOL
INSTITUTE OF
MANUFACTURING
TECHNOLOGY



FINANCIAL STREET



RECREATION
FACILITIES



AMATA MANSION



AMATA SPRING
FAIRWAY VILLAS

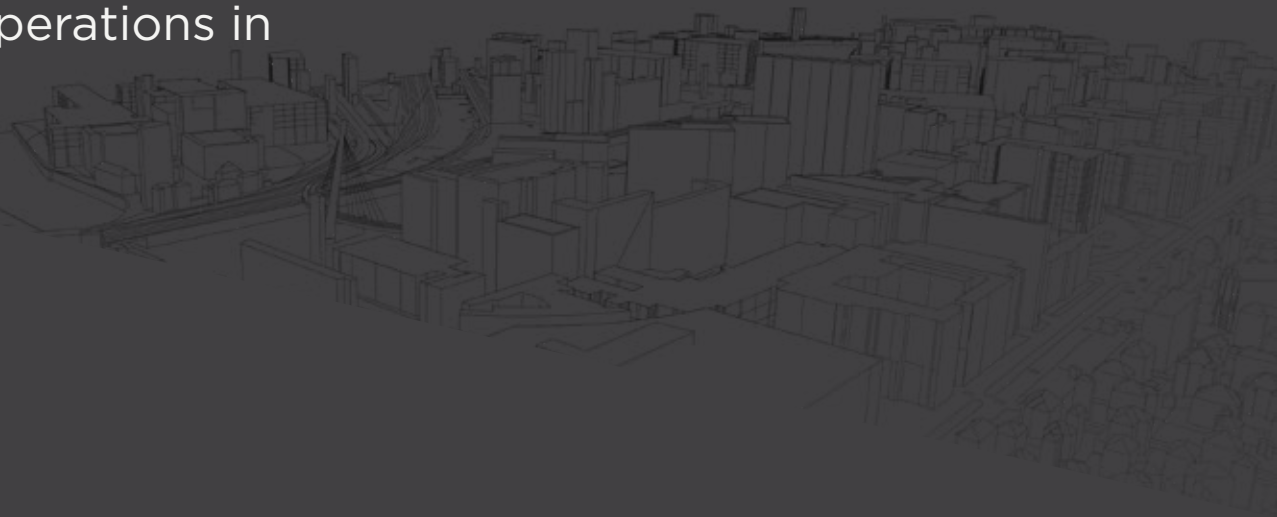


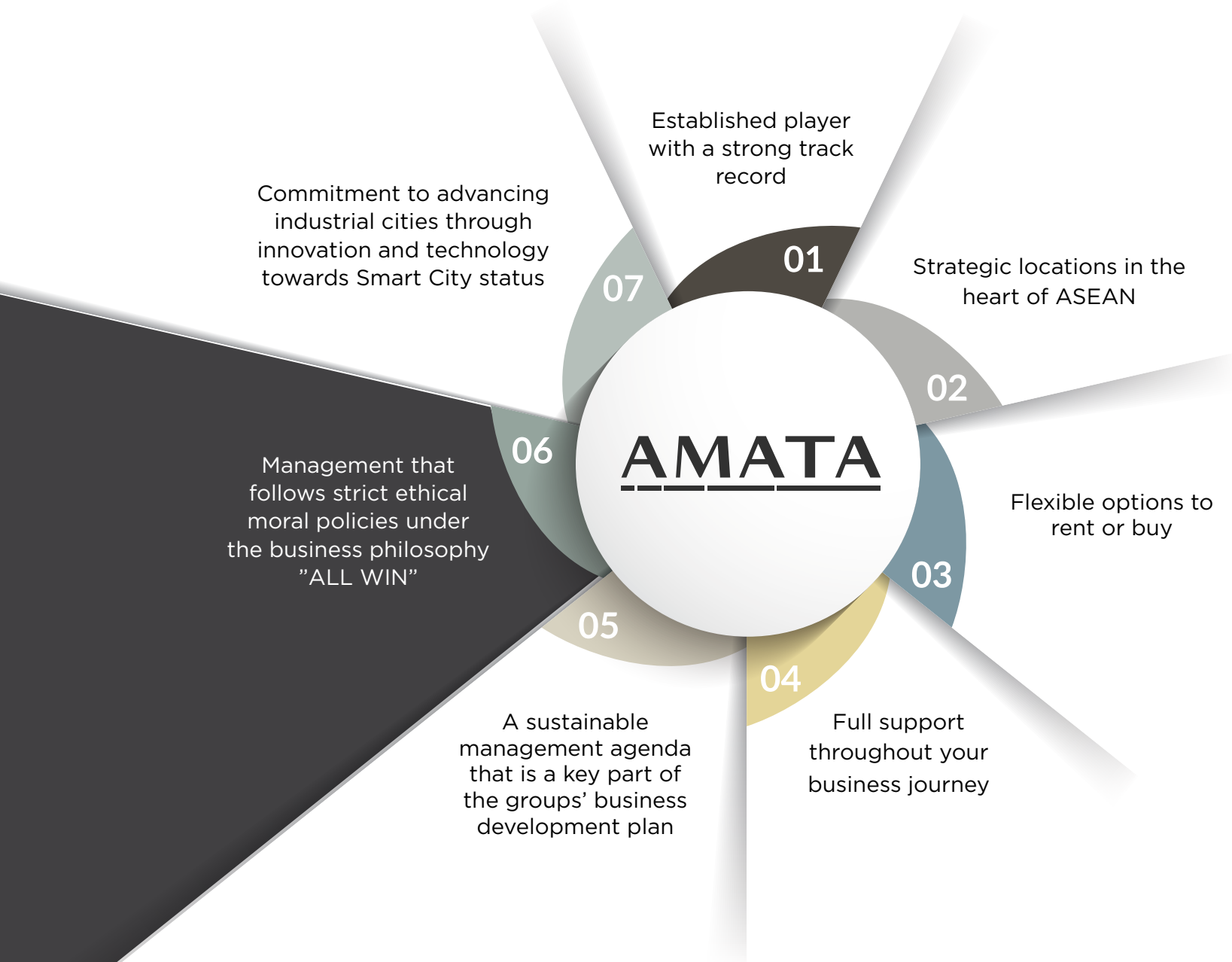
HOTEL NIKKO AMATA
CITY CHONBURI

* availability of facilities and services may vary project by project

7 reasons to invest in AMATA

AMATA is the partner to trust as
you set up or expand operations in
the ASEAN region







Contact us today for more details.

Thailand +66 38 939007, Ext. 306

Vietnam +84 251 3991 007

Myanmar +66 2 792 0000

Laos +856 2057 760 007 (Eng, Jap), +856 2057 550 007

communication@amata.com

Follow us online at:

Facebook: www.facebook.com/amatacorp

LinkedIn: <http://www.linkedin.com/company/amatacorp>



www.amata.com

printed on certified, 100% recycled paper