

# WIRELESS ASSET WAM MONITORING



**ENSURE YOUR PRODUCTS ARE PROTECTED 24/7!**

## HOW IT WORKS

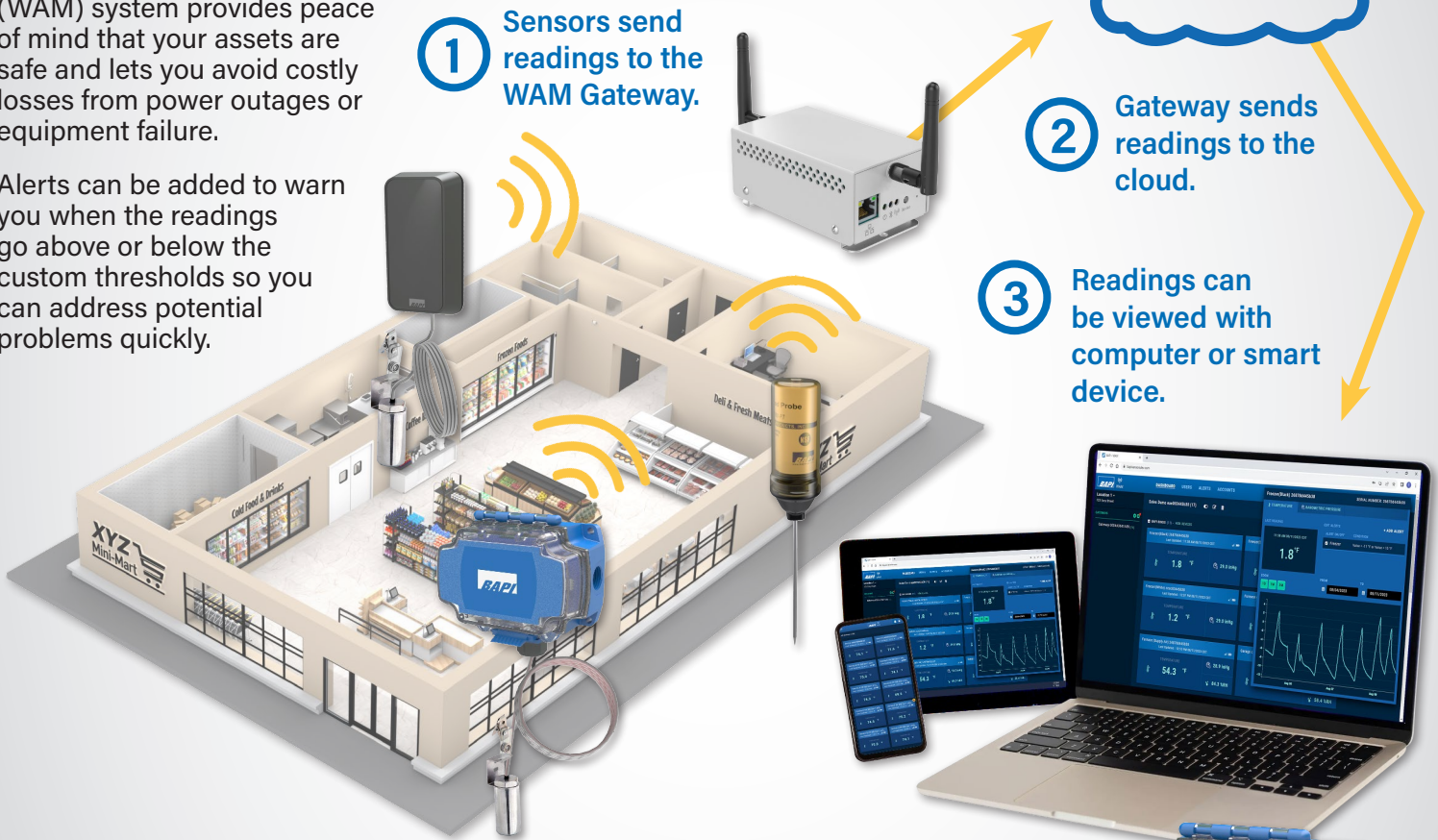
BAPI's Wireless Asset Monitoring (WAM) system provides peace of mind that your assets are safe and lets you avoid costly losses from power outages or equipment failure.

Alerts can be added to warn you when the readings go above or below the custom thresholds so you can address potential problems quickly.

**1** Sensors send readings to the WAM Gateway.

**2** Gateway sends readings to the cloud.

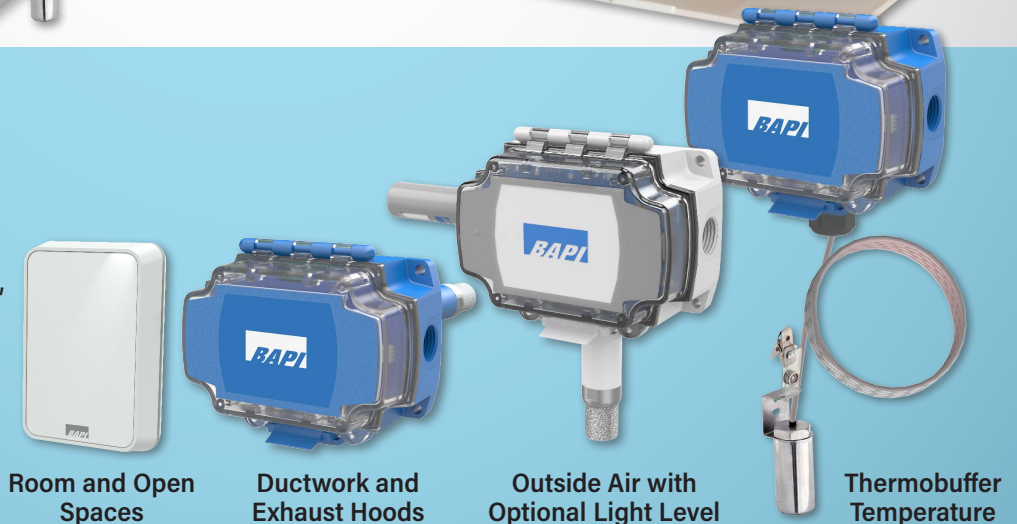
**3** Readings can be viewed with computer or smart device.



## SENSOR TYPES

Sensors are also available with a rugged IP66-rated BAPI-Box enclosure. These provide more protection than the "Quantum Slim" units and can be used in rough service areas, hallways or outside the building.

A sleek and modern BAPI-Stat "Quantum" is also available for rooms and open spaces.



# BAPI-STAT "QUANTUM SLIM" WITH THERMOBUFFER



These sensors are perfect for refrigerators, freezers, reach-in cases or islands. They feature a stainless steel thermobuffer chamber which can be filled with food-safe glycol to track the temperature of the contents rather than the air temperature.

# FOOD PROBE TEMPERATURE SENSORS



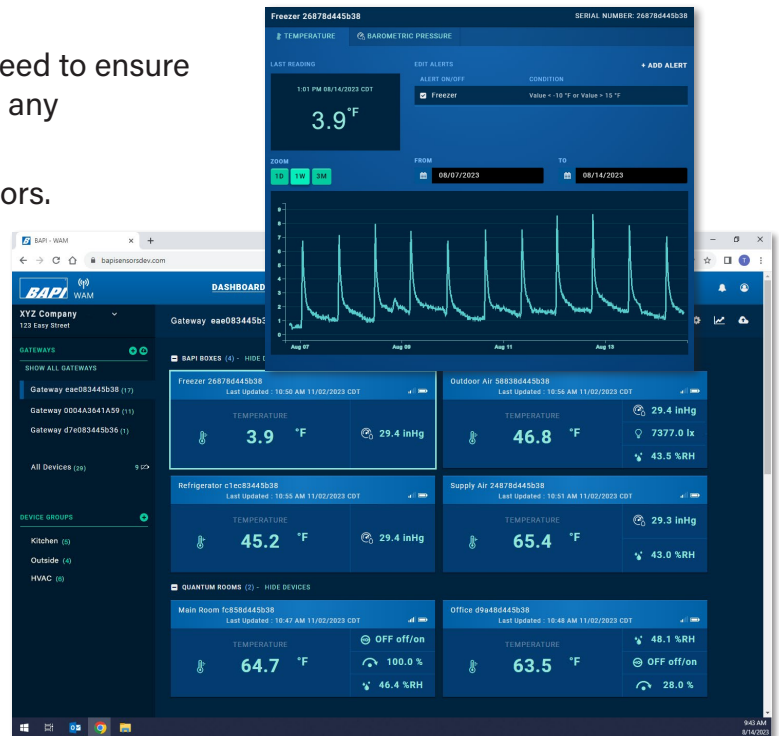
The food probes eliminate the need for an employee to hand record the temperatures with a thermometer for food safety reports. Bin clips are available to fit most food bins. The probe is designed for dishwasher or hand washing.



# WAM WEBSITE

The versatile WAM Website has everything you need to ensure your products are safe and can be accessed with any web-enabled device.

- Live readings from all sensors or selected sensors.
- Historical trending & Historical record of all alarms and corrective actions.
- Customizable alerts with email or SMS notifications when readings are outside of the desired thresholds.
- Visual indication when sensors are in an alert status.
- Easy pdf reports with trend graph and "points of interest" call outs.
- Simple adjustment of sensor properties such as the transmit interval and sample interval.



WAM Website Dashboard Screen (above) and Sensor Trend Window (top).



Building Automation Products, Inc.  
750 North Royal Ave.  
Gays Mills, WI 54631

phone +1-608-735-4800  
email [sales@bapihvac.com](mailto:sales@bapihvac.com)  
website [www.bapihvac.com](http://www.bapihvac.com)



Visit our website